

West Shore Lake Pontchartrain

Stakeholder Update

March 31, 2021

Bradley Drouant, PE, PMP
Sr. Project Manager
New Orleans District
U.S. Army Corps of Engineers



®

US Army Corps of Engineers
BUILDING STRONG®



Agenda

- General Status
- Borrow
- Right-of-Entry
- Pump Station Updates
- St. James Parish Update

General Status

- Levee construction reaches have been optimized to maximize construction access (shown on following page)
 - ▶ Currently have 13 levee contracts and 1 pump station contract
- Continue to coordinate with CPRA regarding design and construction of the west alignment and the State's Maurepas Diversion Project
 - ▶ Have received 15% designs for three reaches being designed by CPRA and provided comments
 - ▶ Detailed designs underway for all Corps of Engineers designed reaches
 - ▶ Contracts currently scheduled to be advertised between April and January 2022
 - ▶ CPRA reaches scheduled to be advertised early 2022
 - ▶ Various design reviews on-going
- Real Estate efforts on-going
- Project Website: www.mvn.usace.army.mil/About/Projects/West-Shore-Lake-Pontchartrain/
 - ▶ Google "West Shore Lake Pontchartrain"
- Planned Meeting with Old Hwy 51 HOA postponed due to inclement weather

General Status (cont.)

- The Sand Stockpile contract was awarded on 17 Feb 21.
 - ▶ The contract was awarded to North Wind Construction Services out of Knoxville, TN for around \$7M.
 - ▶ The contract involves removing sand from the Bonnet Carré Spillway and hauling it to the stockpile area off Hwy. 61. The sand will be used to construct the base for the levees.
- WSLP-101:
 - ▶ Subsurface conditions are very poor in this reach. To ensure a successful and economically viable construction effort, construction of the full levee section will be delayed to accommodate a test section program to determine the best way to construct the levee foundation for the reaches east of I-55. P&S have been finalized for the test section and we hope to award a contract in **June following completion of Access Road J.**
- **Access Roads:**
 - ▶ Working to issue a mod to the borrow stockpile contractor to begin working on extending Access Road J in the next two weeks.
 - ▶ Looking to award contract with remaining access roads in June
- **First Levee Reaches Scheduled for Construction**
 - ▶ The 95% designs have been completed for WSLP-107, WSLP-109, and WSLP-110.
 - ▶ The final P&S should be complete on all 3 contracts within the next 2-3 months.
 - ▶ Pending receipt of right of way for construction, these contracts will be advertised for construction.

Levee Borrow Requirements

- Currently estimating a need of about 7.0M – 9.0M cubic yards of levee material for construction
- Bonnet Carré Spillway (BCS)
 - ▶ BCS currently has 3.5M CY readily available
 - ▶ Access issues due to high stages on Mississippi River
- Will continue to pursue additional Government Furnished borrow
- Contractor Furnished Borrow List used for levee construction in New Orleans not authorized to be used for the WSLP project
- WSLP approved to use commercially available borrow sources
 - ▶ Sources Sought issued to identify commercial borrow sources
 - ▶ Requirements to become a commercial borrow source were included in the Sources Sought solicitation
 - ▶ Sources Sought closed 5 Nov 2020. Comments provided to all applicants
 - ▶ 4 pits have been pre-qualified for inclusion on the list
 - ▶ One additional pit is expected to be pre-qualified in 3 to 4 weeks, and one is likely several months away.

WEST SHORE LAKE PONTCHARTRAIN

MISCELLANEOUS CONTRACTS

- Currently Plan to issue several smaller contracts for various pre-construction efforts
 - ▶ Stockpile contracts
 - Stockpile Contract #1 – Awarded Sep 2020, work halted Mar due to high water.
 - Stockpile Contract #2 – awarded Dec 2019, 150,000 cy stockpiled in spillway, work halted due to high water 23 Mar.
 - Sand Stockpile Contract – Awarded 7 Feb 21
 - ▶ Access Road contract P&S are nearing completion.
 - CPRA is working with utility owners on letters of no-objection, 2 Air Liquide lines remain
 - Access road construction is critical to allow to support construction of levee reaches
 - ▶ Pile Load Test Contract
 - Will be conducted at 4 separate locations
 - Right of way drawings are being revised per PLD/CPRA's request of 29 Mar 21.
 - ▶ May issue an additional tree clearing contract for eastern reaches if supported by schedules

Real Estate/Right-of-Entry

- Right-of-Way for Construction Activities
 - ▶ ROW requests for construction of the entire project have been provided to NFS. Minor comments are being addressed
 - ▶ Surveys, ownerships and appraisals are underway
 - ▶ Right of entry for construction will be critical in our ability to award construction contracts
 - ▶ Revised ROE for the pile load test was sent on 19 Feb 21, comments received 29 Mar 21
 - ▶ Most LONOs for access roads obtained with the exception of 2 Air Liquide lines that were identified recently.

USACE Pump Station and Drainage Structure Recommendations

- Current Recommendations

- ▶ Pump Stations

- Hope Canal - 800 cfs
 - Reserve Canal - 2,000 cfs
 - I-55 - 2,000 cfs
 - Prescott Canal - 800 cfs
 - Total capacity 5,600 cfs (was only 2,150 cfs in feasibility study)

- ▶ Drainage Structures

- 25 total openings in 8 drainage structures
 - Increase of 13 openings

- ▶ Interior Drainage Canal

- 100 ft top width; 30 ft bottom width; 8 ft deep

- 65% review of P&S has been initiated

- H&H Max Agnew here to discuss hydraulics under I-55 with those interested after this presentation.

St. James Parish

General Status

- Currently authorized project consists of ring levees, flap valves on the culverts under Hwy 3125, flood proofing of a small number of structures
- Investigating an additional alternative to expand the ring levees and to eliminate the flap valves
- Risk analysis of the flap valves scheduled to begin in early March 2020 – no longer planning on conducting
- Value Engineering Study conducted week of 04 May 2020
 - ▶ Final report received, currently being reviewed by MVN-OC
- Current Status
 - ▶ A draft informational paper was prepared describing the feasibility study alternative and 3 alternatives (Hwy. 61 and two extended ring levee options)
 - ▶ BBA-18 projects are not eligible for reformulation (changes need to be within the Chief's Discretionary Authority)
 - ▶ An internal Corps meeting was held to discuss the alternatives. Based on current configuration of alternative plans they are not within the Chief's Discretionary Authority.
 - ▶ Our Planning Division is taking another look at the alternatives to see what changes might be needed before they could be recommended.
 - ▶ Alternative 1 is the only one that will be looked at further as it has the best chance.
 - ▶ Plans for the ring levees can move forward while this effort is underway.

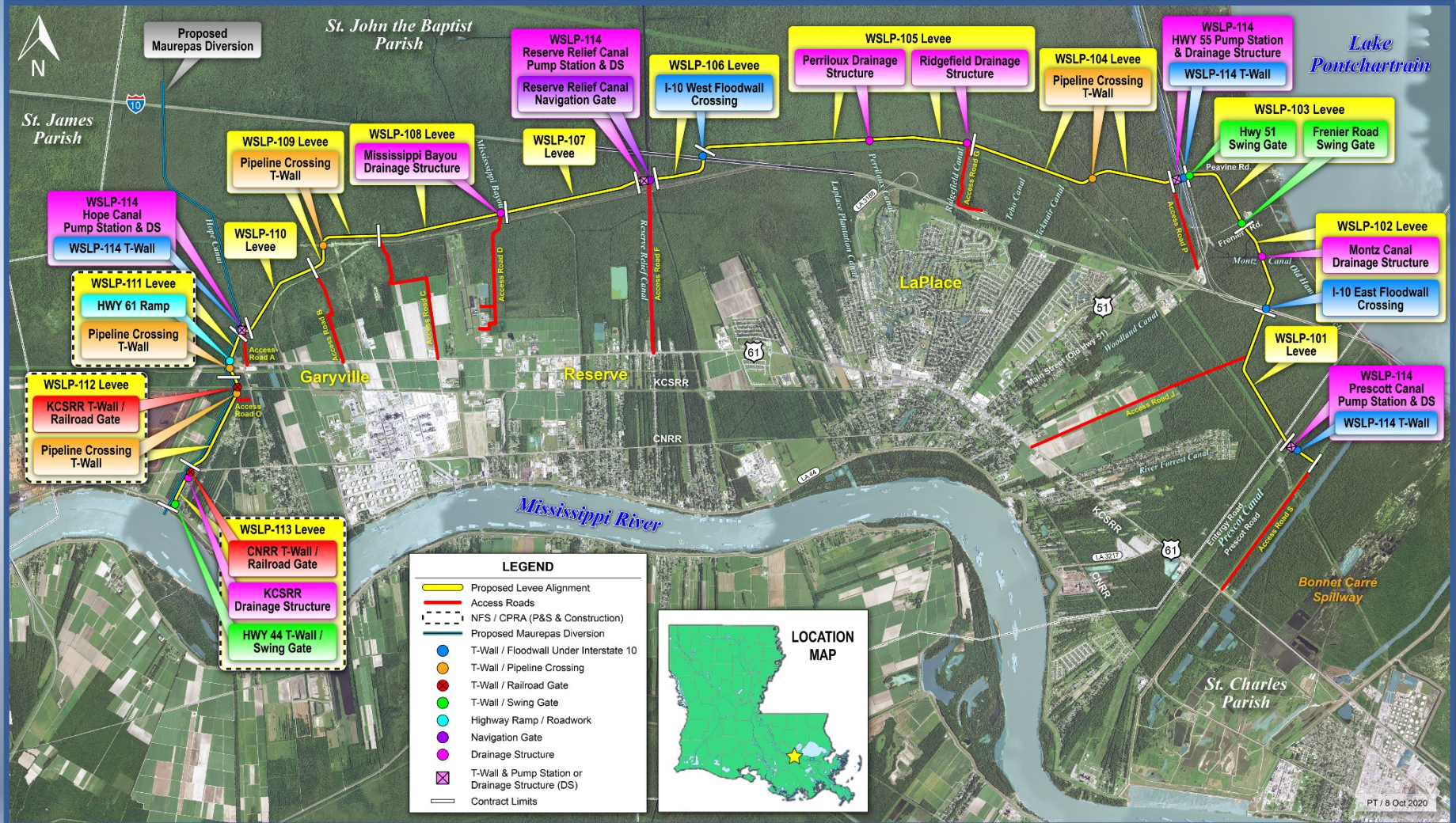
WEST SHORE LAKE PONTCHARTRAIN

PROJECT OVERVIEW

- Authorized as part of the Bipartisan Budget Act of 2018
 - ▶ Public Law 114-322; Section 1401(3)(5)
 - ▶ Authorized as a Hurricane and Storm Damage Risk Reduction System project
 - ▶ CPRA and Pontchartrain Levee District are the non-Federal Sponsors
 - ▶ Cost share – 65% Federal and 35% non-Federal
- **Project Description / Scope**
- Alignment is approximately 23 miles in length, consisting of 22.0 miles of levee and 1 mile of T-wall:
 - St. Charles Parish = 0.5 miles; St. John Parish = 18.0 miles; St. James Parish = 4.5 miles.
- The project includes 4 pump stations, 8 drainage structures, 3 gated road crossings, 2 railroad gates, approximately 35 utility relocations, 145 culvert valves / gates, and raising / floodproofing of a limited number of structures.
- 7.0 – 9.0 million cy of embankment material needed for levee construction.
- In excess of 1,000 acres of new right of way will need to be acquired.
- Habitat impacts will require compensation for approximately 1,090 AAHU's
- \$760M appropriation (includes real estate, design, construction, etc.)



West Shore Lake Pontchartrain





WSLP - St James Parish



WEST SHORE LAKE PONTCHARTRAIN

TENTATIVE *DELIVERY PLAN*

| Contract ID | Description | Acquisition Strategy | Scheduled Construction Complete Date | Estimated Contract Value |
|--------------------|---|-----------------------------|---|---------------------------------|
| WSLP 101 | Levee | Small Business | 3Q 2023 | \$25M - \$50M |
| WSLP 102 | Levee, Floodwall, Drainage Structure(s) | Small Business | 4Q 2022 | \$25M - \$50M |
| WSLP 103 | Levee, Floodwall, Flood Gate | Small Business | 1Q 2023 | \$15M - \$25M |
| WSLP 104 | Levee, Floodwall, Utility Crossings | Small Business | 3Q 2023 | \$25M - \$50M |
| WSLP 105 | Levee, Floodwall, Drainage Structure(s) | Small Business | 2Q 2023 | \$35M - \$55M |
| WSLP 106 | Levee and Floodwall | Small Business | 2Q 2023 | \$15M - \$25M |
| WSLP 107 | Levee, Floodwall, Drainage Structure(s) | Small Business | 1Q 2023 | \$15M - \$25M |
| WSLP 108 | Levee | Small Business | 1Q 2023 | \$15M - \$25M |
| WSLP 109 | Levee, Floodwall, Utility Crossings | Small Business | 1Q 2023 | \$5M - \$20M |
| WSLP 110 | Levee | Small Business | 1Q 2023 | \$5M - \$20M |
| WSLP 111 | Levee, Highway Ramp, Utility Crossings | Small Business | 4Q 2022 | \$20M - \$40M |
| WSLP 112 | Levee, Rail Road Gate, Floodwall, Utility Crossings | Small Business | 3Q 2023 | \$5M - \$20M |
| WSLP 113 | Levee, Floodwall, Rail Road Gate | Small Business | 2Q 2023 | \$5M - \$20M |
| WSLP 114 | Pump Stations | Unrestricted/Best Value | 3Q 2023 | \$150M - \$250M |

Note: Project requirements and schedule are subject to change as designs are refined and impacts identified.

Environmental Clearances

- No additional environmental clearances are required before construction can begin

Questions